



Ray Allen Leibensperger
Sergeant First Class U. S. Army
22 June 1948 - 9 May 1952

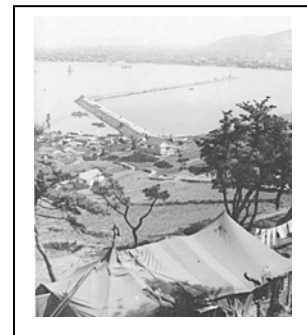


Pennsylvania National Guard



213th Regional Support Group
Pennsylvania National Guard

Ray was born at home on 25 August 1930 in East Texas, Pennsylvania. He attended grade school at East Texas Elementary School from 1936 to 1944, and graduated from Emmaus High School in Emmaus, Pennsylvania, in 1948. On 4 June 1948, he joined the Army National Guard as a member of 213th Regional Support Group, headquartered at 1501 Allen Street in Allentown, Pennsylvania. After graduation from high school, he also went to work for Hill Metal & Roofing Company in Allentown as a Metal Fabricator. On 12 August 1950, Ray married **Nancy Anne Weida** of Emmaus (born 9 July 1930) at St John's Lutheran Church in Emmaus. As a result of the outbreak of the Korean War in June 1950, Ray was called to active duty the following month on 29 August. He was transferred to Battery B, 213th AAA Gun Battalion at Camp Stewart, Georgia, where he was assigned to the Motor Pool until his transfer to Fort Knox, Kentucky, on 4 December 1950. At Fort Knox, he attended Wheel and Track School until 7 April 1951. After graduation, he returned to Fort Stewart where he was promoted to Sergeant First Class and was placed in charge of the Motor Pool. The following month, Ray and his Battery were transferred to Fort Dix, New Jersey, where they underwent training in preparation for deployment to Korea. In September 1951, they left by rail for Fort Lawton, Washington Processing Center, boarded the *General F. Halsey* at Seattle, Washington, for transport to Pusan, Korea, and arrived at Pusan Harbor on 11 November 1951. They then deployed to assist in the defense of the harbor as part of the overall defense of the Pusan Perimeter. Ray remained there until his return to the States in May 1952 for discharge, as his unit was being replaced by regular Army troops of the 24th AAA Gun battalion. He arrived in San Francisco by ship and crossed country by rail to Indiantown Gap, Pennsylvania, for discharge. For his service, Ray was awarded the Korean Service Medal with one bronze star and the United Nations Service Medal. After his discharge on 9 May 1951, Ray returned home to East Texas, where he established his permanent residence and became the owner/operator of the family-owned Leibensperger School Transportation, Inc., until 1987. In 1971, he became Owner/Operator of Leibensperger Transportation Sales, Inc., in Macungie, Pennsylvania. Ray has three children: **Anne Louise Leibensperger**, **Russ Allen Leibensperger**, and **Lynne Louise (Leibensperger) Roth**. Ray's parents were **Allen Milton Leibensperger** (15 April 1901 – 6 December 1970) and **Esther Ruth Bortz** (29 May 1900 – 29 December 1999).



Pusan Harbor – 1950s